

R&D and Lab VDSL2 Protocol Analyzer



VDSL Xpert™

The Only Non-Intrusive Analyzer for VDSL2

Product Overview

The VDSL Xpert™ multi-layer analyzer breaks new ground as the only non-intrusive performance analysis solution for VDSL2 products. VDSL Xpert™ is a modular tool designed for R&D and laboratory engineers engaged in the development and deployment of VDSL2 standard-compliant solutions. Cutting significant time from VDSL2 development, deployment, debugging and interoperability verification, VDSL Xpert™ accelerates time to market and return on investment.

The innovative VDSL Xpert™ analyzer verifies the interoperability of VDSL products offered by different vendors, and compares the performance of any combination of CO and CPE modems. VDSL Xpert™ is a powerful tool for VDSL service providers (Telcos and CLECs), equipment manufacturers and technology and chipset developers.

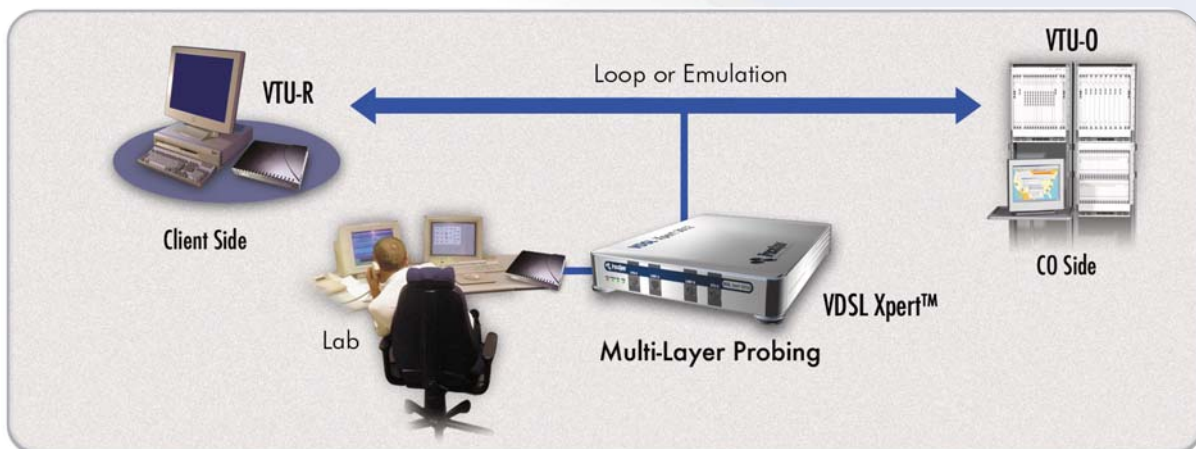
Leveraging patent-pending non-intrusive technology and following the overwhelming industry acceptance and tremendous success of the company's flagship system, the DSL Xpert™ ADSL analyzer, the new system defines a class by itself. The VDSL Xpert™ does not affect data transfer between the transceivers, thereby giving a complete and accurate analysis of VDSL product performance and interoperability. With its unique multi-layer probing capability, VDSL Xpert™ focuses on the physical layer, and provides comprehensive analysis of data in any form - from analog samples to bits and messages. VDSL Xpert™ simultaneously presents downstream and upstream data and the connection between the two. A user-friendly software-based solution controlled by a PC, VDSL Xpert™ has a feature-rich GUI that presents multi-layer information in convenient displays.

VDSL Xpert™ is the only non-intrusive and unbiased testing tool that does not have VDSL chipset inside. As the only developer of xDSL non-intrusive protocol analyzers, TraceSpan gained worldwide recognition as an industry leader whose products are sought after and used by all major chipset vendors, modem makers and telephone companies.

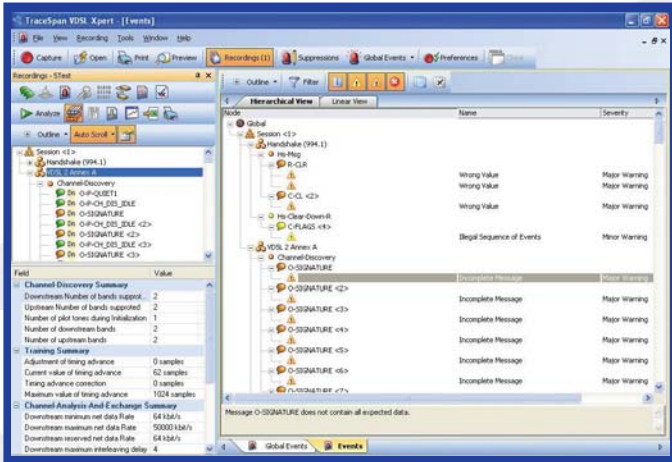
Advantages

- Testing of VDSL and VDSL2
- Comprehensive Performance Analysis
- Independent Testing tool – no VDSL chipset
- Non-Intrusive Monitoring
- Multi-Layer Probing
- User-Friendly PC-Controlled GUI
- Command Line for Automatic Testing (CLI)
- Accelerates Time to Market
- Decision Making Tool for Managers
- Quick Return on Investment

Flexible Configuration Options

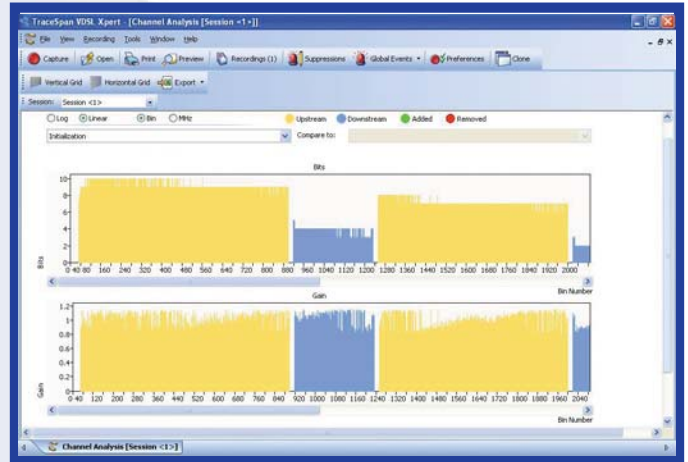


VDSL Xpert™ is easily configured at any physical location between the CO and subscriber equipment



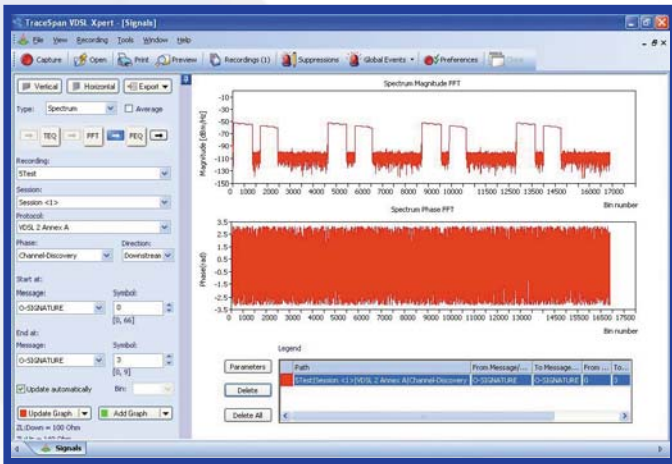
Events View

Warnings, Errors and Incompatibility issues



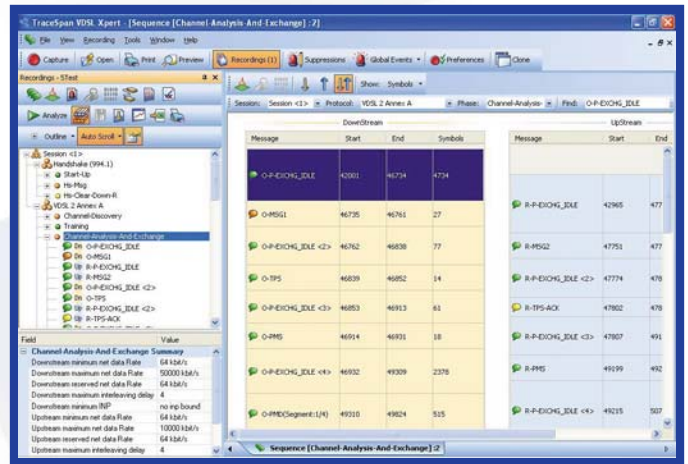
Channel Analysis

Bits & Gain map, PSD, QLN and SNR



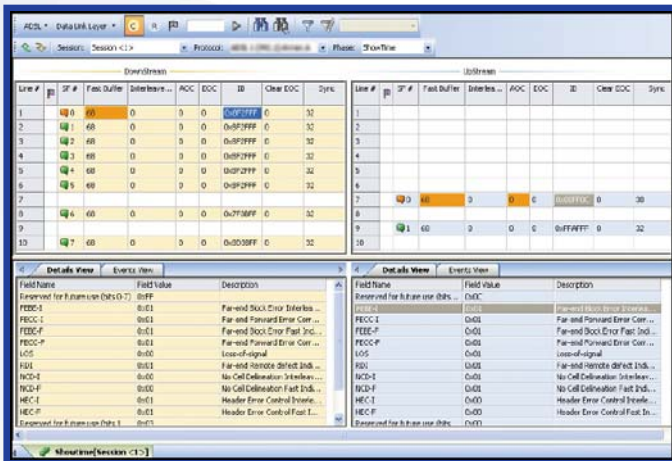
Signal View

Signal, Spectrum and Constellation Map



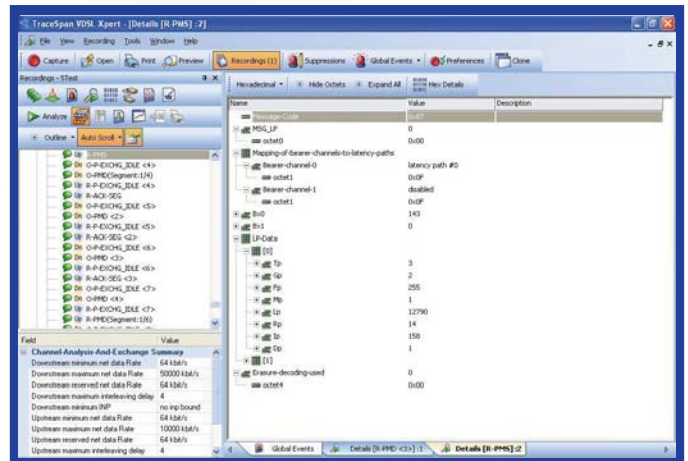
Sequence View

Bi-directional Time-line



Showtime View

Data link layer, Messages, Events



Details View

Message content details

Features and Benefits

Features	Benefits
Verification	Provides standard-compliant and performance-compliant verification
VDSL / VDSL2	Offers solutions for current and next-generation products
Simultaneous Data Extraction	Simultaneously displays upstream and downstream data and the link between the DSLAM and CPE modems
Archive	Stores and plays back raw data and measurements in the form of samples and/or detected information
Alerts	Provides warnings regarding incompleteness of measurements or incompatibility within the VDSL Standards
Comprehensive Reporting	Displays range of graphs, tables and reports relating to performance and errors. The Report Wizard allows automatic generation of exportable reports
Automatic Testing	Command Line Interface (CLI) is included, allowing integration into existing automated test environment
Multi-layer Probing (Sniffing)	Tracks and displays events through the Physical and the Upper Layers, including signal, bit-pattern, sequence length, message structure and timing
Independent Testing	Detects and verifies problems without the need to rely on any VDSL chipset
Exporting the Data	Allows users to extract the data to other tools such as Matlab® or exporting the data to Excel® Worksheet
New Software Evaluation	Identifies problems before a new software version is released in the network
New Hardware QA	Checks performance and reliability before deploying new equipment

Specifications

Standards Compatibility	VDSL (ITU-T G.993.1) VDSL2 (ITU-T G.993.2)
Dimensions	Height: 50mm (2 in.) Width: 275mm (10.8 in.) Depth: 375mm (14.7 in.)
Weight	3kg (6.6 lb)
Power Supply	External Power Supply Voltage – 100-240VAC Frequency – 50/60 Hz Power – 20W
Safety Standard	CE
Certifications	FCC part 15
Operating Environment	Temperature: 0°- 40°C (32°-104°F) Humidity: 10% to 90% non-condensing

Contact Information

E-mail: info@tracespan.com
Web: www.tracespan.com